

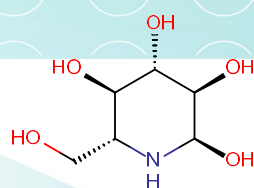
## SL-06. Glycomimetics (Piperidine)

Carbohydrates are fundamental components of every cell surface, where they are involved in vital cellular recognition processes. Despite their physiological importance they are rarely used as drugs because of their pharmacodynamic and pharmacokinetic properties which are poor for therapeutic application; moreover, there are issues with low tissue permeability, oral bioavailability, short serum half-life, fast renal excretion, and metabolic instability.

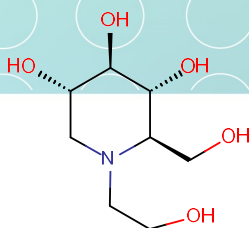
ASINEX has overcome these obstacles by creating a glycomimetic library that ensures the bioactive function of

carbohydrates while addressing the drawbacks of carbohydrates, such as their low activity and poor drug-like properties.

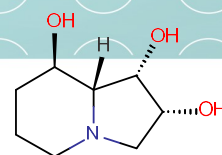
ASINEX has employed a number of methods in creating this library, one of which is to replace the carbohydrate ring with piperidine. These compounds which are known as “iminosugars” or “aza-sugars” represent a very promising class of molecules with a broad spectrum of pharmacological activity [1].



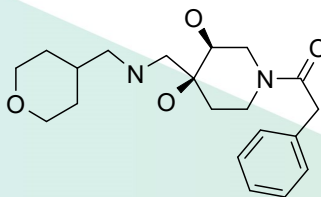
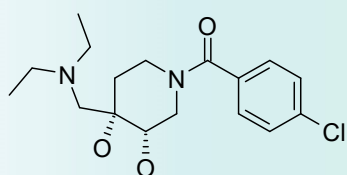
**Nojirimycin**



**Miglitol**



**Swainsonine**



**Iminosugars  
Aza-sugars**

### Signature Library 06 [piperidine]

Formats	Supplementary Information
80 compounds per plate 0.1 mg; 1 mg; 2 mg dry film/powder 0.1 μmol; 1 μmol DMSO solutions	SL#6_Glycomimetic_piperidine_04-16.sdf

#### References:

1. *Future Med Chem.* 2011 Sep;3(12):1513-21. doi: 10.4155/fmc.11.117.

#### Contact us:

USA: +1 336 721 1617  
Japan: +81-80-3401-9097  
Europe/Global:

[mparisi@asinex.com](mailto:mparisi@asinex.com)  
[sota@asinex.com](mailto:sota@asinex.com)  
[lsadovenko@asinex.com](mailto:lsadovenko@asinex.com)