

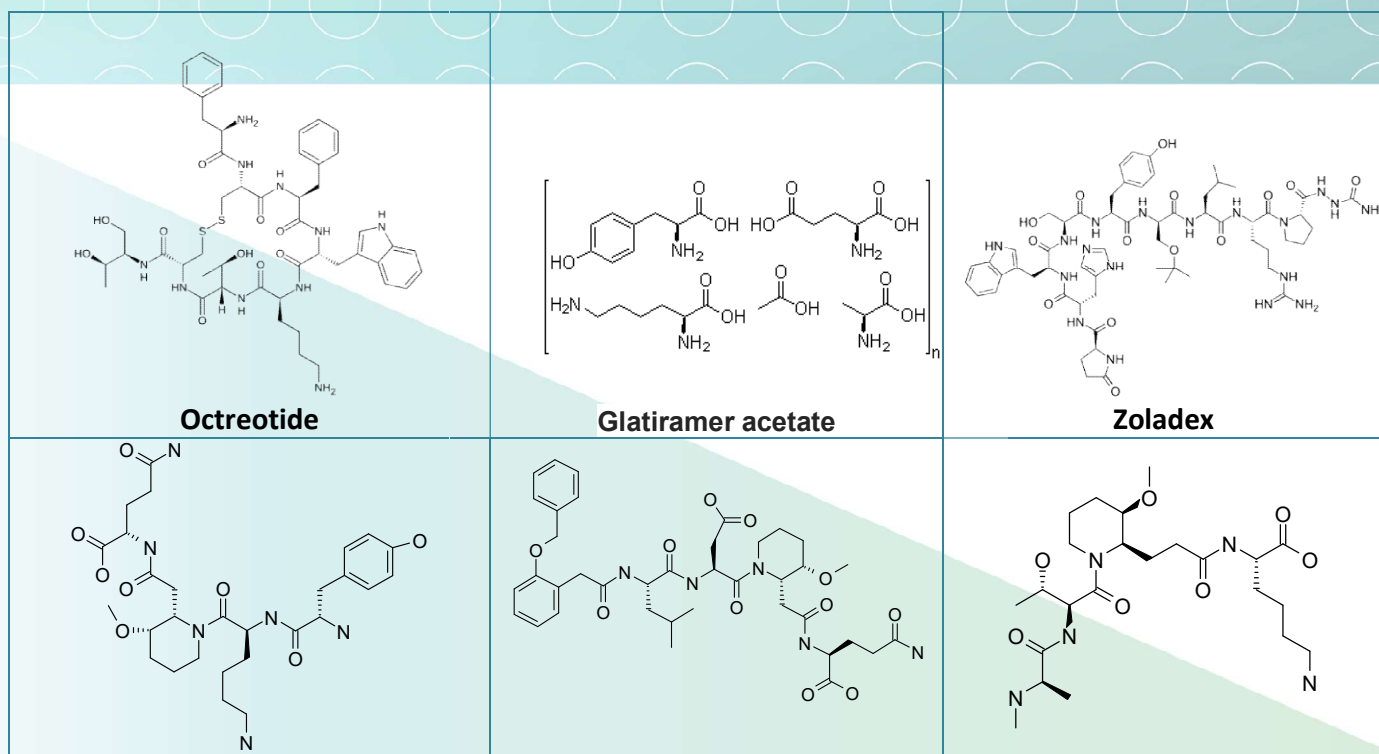
# SL-40 Constrained Tetrapeptides

Therapeutic application of peptides has recently expanded to HIV, osteoporosis, cancer, and CNS-related disease. There are approximately 60 approved peptide products on the market today, including Copaxone®, Leuprolide®, Octreotide®, Byetta®, and Forteo® along with more than 150 products at various stages of clinical development. Peptide therapeutics have shown superior potency and target selectivity in comparison to more traditional non-peptide small-molecules. There are obstacles, however, as often peptides lack metabolic stability *in vivo* and are not orally bioavailable.

Recently these obstacles have been addressed as functional activity, metabolic stability, and pharmacokinetic

properties [1] have been improved through the creation of conformationally constrained peptides

ASINEX, in turn, has created a library of constrained tetrapeptides using a novel unnatural piperidine-containing amino acid fragment. The intrinsic rigidity from the piperidine ring is enhanced by judicious choice of other amino acids carefully decorated with diverse side chains. According to *in silico* modeling some molecules can adopt a beta-turn-like conformation and can therefore be considered beta-turn mimetics.



## Signature Library 40

Formats	Supplementary Information
80 compounds per plate 0.1 mg; 1 mg; 2 mg dry film/powder 0.1 μmol; 1 μmol DMSO solutions	SL#40_Constrained_Tetrapeptides.sdf

### References:

1. *Future Med Chem.* (2013) 5(7), 831–849. doi: 10.4155/FMC.13.25.

### Contact us:

USA: +1 336 721 1617  
 Japan: +81-80-3401-9097  
 Europe/Global:

[mparisi@asinex.com](mailto:mparisi@asinex.com)  
[sota@asinex.com](mailto:sota@asinex.com)  
[lsadovenko@asinex.com](mailto:lsadovenko@asinex.com)