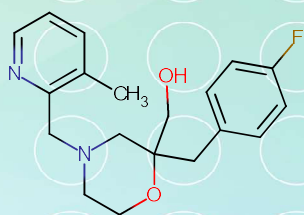


SL-77. Morpholines for CNS drug discovery

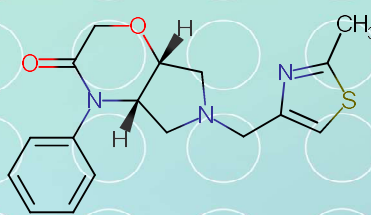
The morpholine ring can be found in multiple drugs, lead molecules and natural products and this ring is widely used by medicinal chemists for optimizing important compound properties: solubility, stability, selectivity [1]. Constrained scaffolds containing a morpholine ring are used

in the design of peptidomimetics and other biologically relevant compounds [2,4].

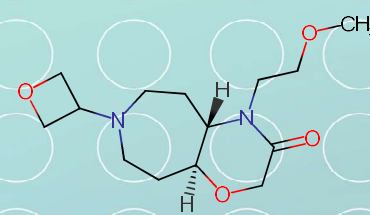
Asinex has developed several novel lead-like morpholine-containing small molecules, that predictably demonstrate favorable CNS-like properties (CNSMPO > 4 [3]).



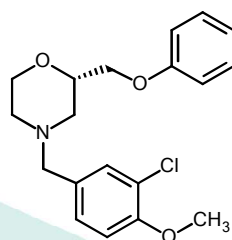
LAS 51753386
CNS MPO 5.8



LAS 73701293
CNS MPO 5.8



LAS 73708666
CNS MPO 6.0



D4 Dopamine Receptor Antagonists [4]

Signature Library 77

Formats	Supplementary Information
80 compounds per plate 0.1 mg; 1 mg; 2 mg dry film/powder 0.1 μmol; 1 μmol DMSO solutions	SL#77_Morpholines_for_CNS

References:

1. *J. Med. Chem.*, Vol. 57, Issue 14, p. 5845, doi: 10.1021/jm4017625
2. *J. Med. Chem.*, 2017, 60 (17), pp 7233–7243 doi: 10.1021/acs.jmedchem.7b00151
3. *ACS Chem. Neurosci.* 2010 Jun 16; 1(6): 435–449. doi: 10.1021/cn100008c
4. *J. Med. Chem.*, 2017, 60 (17), pp 7233–7243, doi: 10.1021/acs.jmedchem.7b00151

Contact us:

USA: +1 336 721 1617
Japan: +81-80-3401-9097
Europe/Global:

mparisi@asinex.com
sota@asinex.com
lsadovenko@asinex.com