

Recombinant Monoclonal Antibody

CUSABIO TECHNOLOGY LLC



CUSABIO TECHNOLOGY LLC

Postal Address : 7505 Fannin St. Ste 610-322, Houston, TX 77054, USA
Tel : 301-363-4651 (Available 9 a.m. to 5 p.m. CST from Monday to Friday)
Email: cusabio@cusabio.com
Web: www.cusabio.com



YOUR
GOOD PARTNER
IN BIOLOGY RESEARCH
www.cusabio.com



Recombinant antibodies are a type of monoclonal antibodies, which are generated in vitro from a synthetic gene without immunizing animals or cultivating hybridomas. After cloning the antibody genes into an expression vector, then transfected into an appropriate host cell line for antibody expression. Compared to traditional antibodies, recombinant antibodies result in superior lot-to-lot consistency, continuous supply, and animal-free advantages. As such, recombinant antibodies are being used more and more widely for scientific research, especially as a solution to addressing the repeatability crisis.

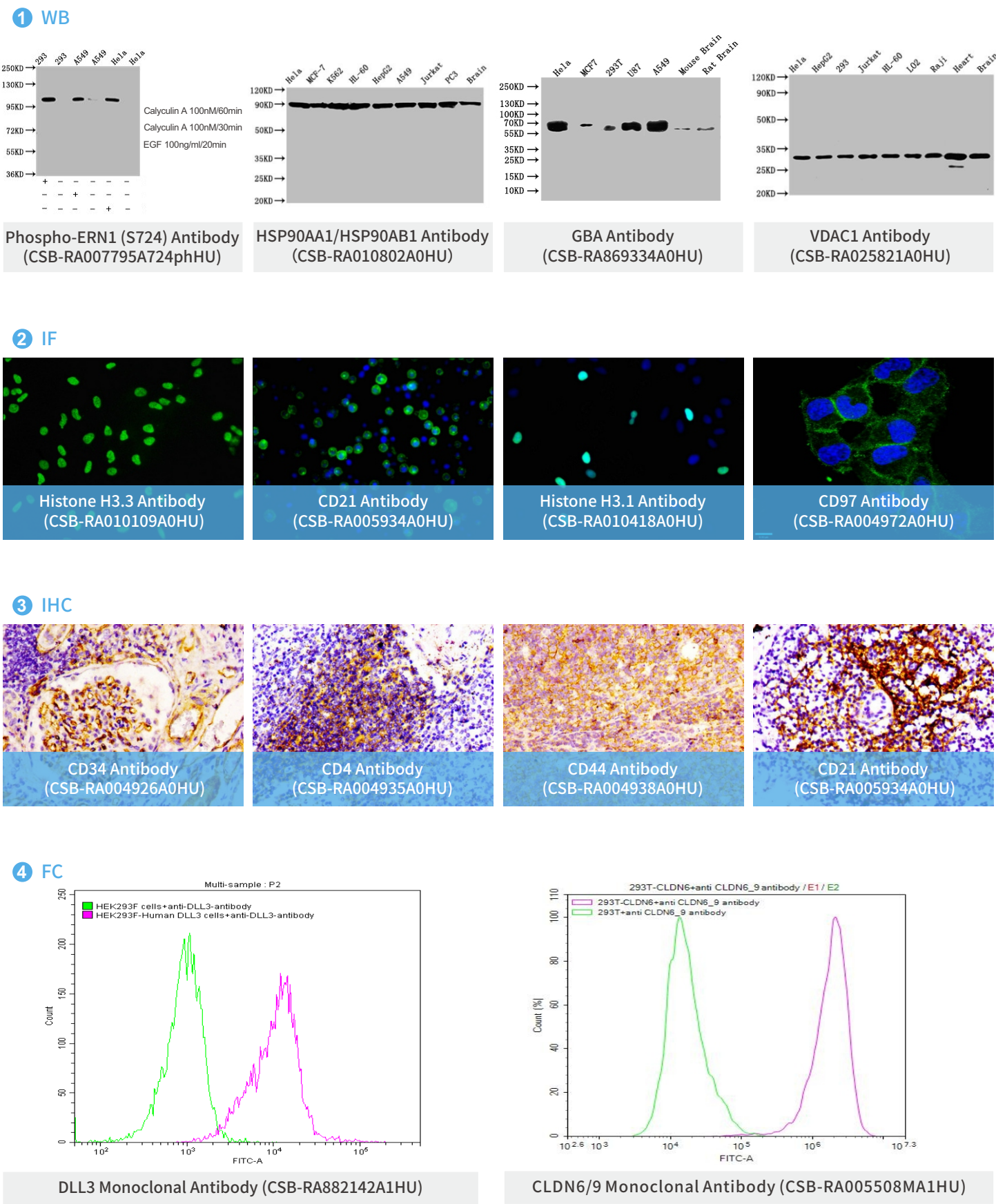
CUSABIO has been working on the development and production of recombinant antibodies since from 2020. Currently, CUSABIO has more than 700 recombinant antibodies in stock, and most of CUSABIO recombinant antibodies had been validated in multiple applications. In order to better help our customers on therapeutic antibody discovery, CUSABIO also had successfully produced the recombiant antibodies specific for many druggable targets, including CLDN18.2, CLDN6, CCR8, SSTR2, DLL3, LY6G6D, ROR1, SEMA4D, GPC3, CD16A, and so on.

Comparison between Recombinant Antibody and Traditional Antibody

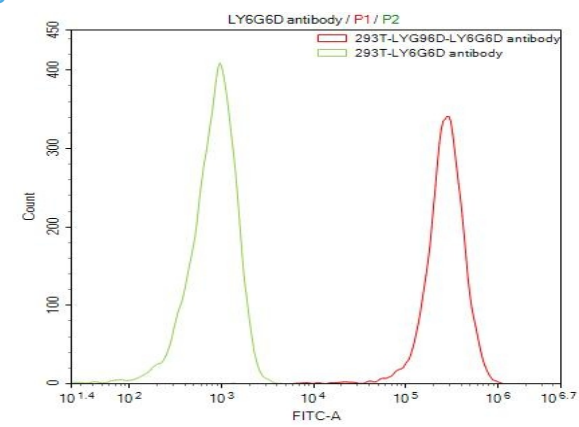
	Monoclonal antibody	Polyclonal antibody	Recombinant antibody
Reproducibility	High; the difference between batches is small	Low	Higher; high purity, smaller difference between batches
Specificity	Strong	Weak	Stronger
Production Cycle	4 to 6 months development; 4 to 6 weeks production	2 to 3 months development and production	4 months development; 1 to 6 weeks production
Isotype Switching	difficult	difficult	convenient
Expression System	Mouse ascites method and in vitro methods	Commonly in mammalian cells (rabbit)	Commonly in mammalian cell lines, also can be expressed inspecially-engineered cell lines from yeast, bacteria, insects, and transgenic plants
Cost	Expensive to produce; require more specialized people to operate	Relatively low cost	Require technical expertise and significant investments in time and money to produce
Human Immune Response	Unavoidable	Unavoidable	Avoidable

CUSABIO recombinant antibodies have been validated in multiple applications, including WB, IF, IHC, FC, IP, ELISA, GICA and Neutralizing.

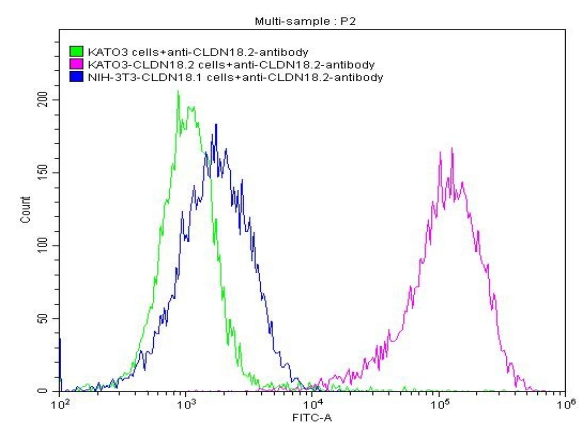
Partial Validation Data of Each Application for Your Brief Reference as Follows



4 FC

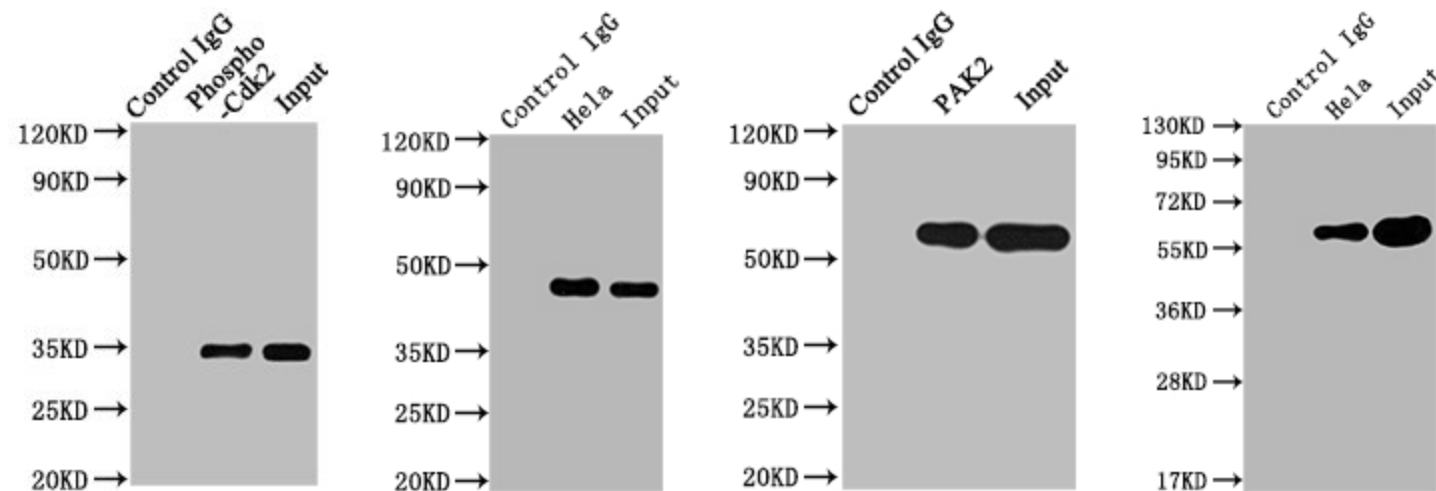


LY6G6D monoclonal antibody (CSB-RA013246MA1HU)



Claudin-18.2 Monoclonal Antibody (CSB-RA005498A1HU)

5 IP



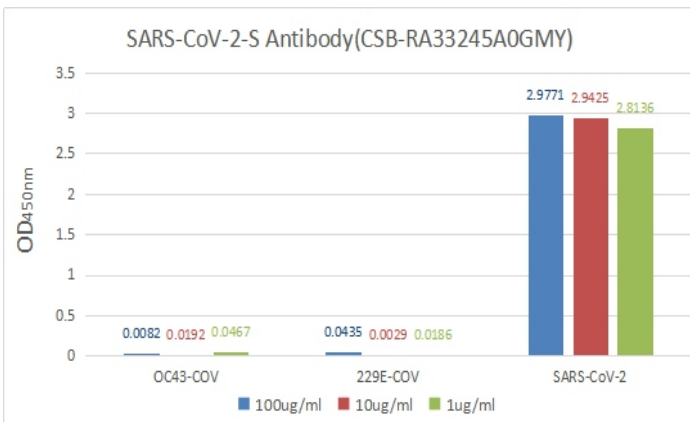
Phospho-CDK2 (Y15) Antibody (CSB-RA005061A15phHU)

MAP2K1 Antibody (CSB-RA957619A0HU)

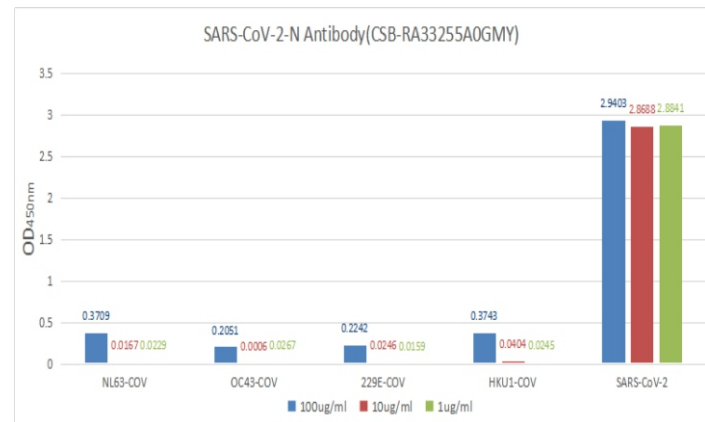
PAK2 Antibody (CSB-RA592787A0HU)

PKM Antibody (CSB-RA632595A0HU)

6 ELISA



S Antibody (CSB-RA33245A0GMY)

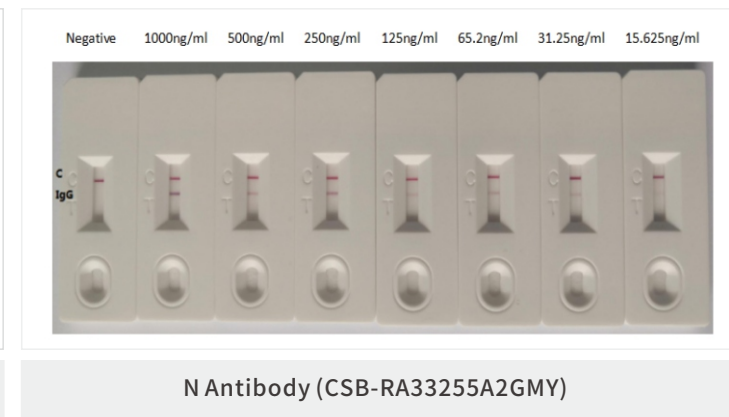


N Antibody (CSB-RA33255A0GMY)

7 GICA

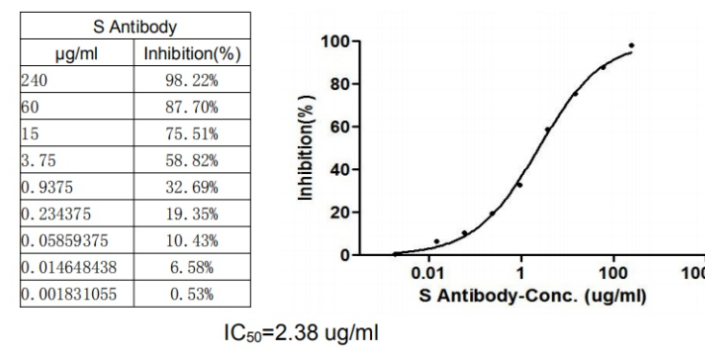


N Antibody (CSB-RA33255A1GMY)

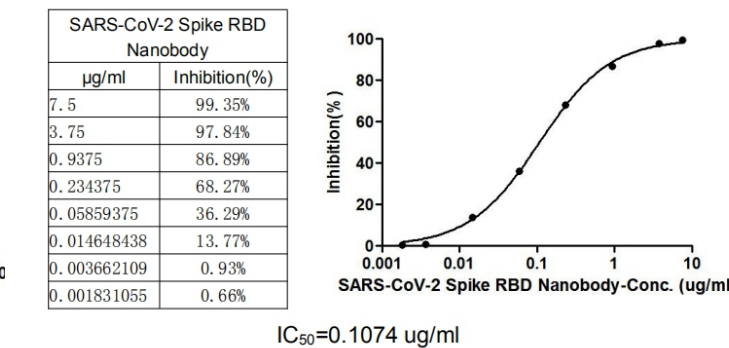


N Antibody (CSB-RA33255A2GMY)

8 Neutralizing



S Antibody (CSB-RA33245A1GMY)



SARS-CoV-2 Spike RBD Nanobody (CSB-RA33245A2GMY)

CUSABIO Top 50 Best-selling Recombinant Antibodies



CUSABIO recombinant antibodies have been well received by many customers recent years, which are widely used for scientific research, development of diagnostic reagents and the discovery service of therapeutic antibodies. In order to give you a brief reference in the shortest time, CUSABIO top 50 best-selling recombinant antibodies are shown as follows.

Product Name	Code	Species Reactivity	Tested Applications
Acetyl-Histone H3.1 (K14) Antibody	CSB-RA010418A14acHU	Human, Rat	ELISA, WB, ICC, IF
Acetyl-Histone H4 (K16) Antibody	CSB-RA010429A16acHU	Human, Mouse	ELISA, WB, ICC, IF, FC
ACTA1 Antibody	CSB-RA001205A0HU	Human	ELISA, WB, IHC, IF, FC
ATF4 Antibody	CSB-RA002272A0HU	Human	ELISA, WB, IHC, IF, FC, IP
ATM Antibody	CSB-RA618770A0HU	Human	ELISA, WB, IHC, IP

Product Name	Code	Species Reactivity	Tested Applications
BCL2 Antibody	CSB-RA002611A0HU	Human, Mouse, Rat	ELISA, WB, IHC, FC
CCR4 Monoclonal Antibody	CSB-RA004843MA01HU	Human	ELISA, FC
CCR8 Monoclonal Antibody	CSB-RA004847A1HU	Human	FC
CCR9 Antibody	CSB-RA004848A0HU	Human, Mouse	ELISA, WB, IF, IP
CD19 Antibody	CSB-RA780821A0HU	Human	ELISA, WB, IHC, IP
CD47 Antibody	CSB-RA802124A0HU	Human	ELISA, WB, IHC, IF
CD81 Antibody	CSB-RA004960A0HU	Human, Mouse, Rat	ELISA, WB, IHC, FC
CD9 Antibody	CSB-RA004969A0HU	Human	ELISA, WB, IHC, IF, FC
CDK6 Antibody	CSB-RA555745A0HU	Human	ELISA, WB, IP
Claudin-18.2 Monoclonal Antibody	CSB-RA005498A1HU	Human	ELISA, FC
CLDN18 Monoclonal Antibody	CSB-RA005498A2HU	Human	ELISA, FC
DDX5 Antibody	CSB-RA231179A0HU	Human, Mouse	ELISA, WB, IHC, IF, FC
DHFR Antibody	CSB-RA264582A0HU	Human, Mouse, Rat	ELISA, WB, IHC, IP
DLL3 Monoclonal Antibody	CSB-RA882142A1HU	Human	ELISA, FC
E2F1 Antibody	CSB-RA826096A0HU	Human, Rat	ELISA, WB, IHC, IF, FC
FGFR2 Antibody	CSB-RA154582A0HU	Human, Mouse, Rat	ELISA, WB
FOS Antibody	CSB-RA008790A0HU	Human, Mouse	ELISA, WB, IHC, IF, FC
FUBP1 Antibody	CSB-RA157765A0HU	Human	ELISA, WB, IHC, IF, FC, IP
GBA Antibody	CSB-RA869334A0HU	Human, Mouse, Rat	ELISA, WB
GDNF Antibody	CSB-RA009356A0HU	Human	ELISA, WB, IHC, FC, IP
HDAC6 Antibody	CSB-RA010242A0HU	Human	ELISA, WB, IHC, IP
HMGB1 Antibody	CSB-RA439052A0HU	Human	ELISA, WB, IHC
HNRNPC Antibody	CSB-RA010605A0HU	Human	ELISA, WB, IHC, IF, FC, IP
HSP90AA1/HSP90AB1 Antibody	CSB-RA010802A0HU	Human, Rat	ELISA, WB, FC, IP
ID1 Antibody	CSB-RA253477A0HU	Human, Mouse	ELISA, WB, IF
ITGB1 Antibody	CSB-RA011880A0HU	Human	ELISA, WB, IHC, IF, FC
LOXL2 Antibody	CSB-RA907007A0HU	Human, Mouse, Rat	ELISA, WB, IHC, IF, FC

Product Name	Code	Species Reactivity	Tested Applications
MAPK10 Antibody	CSB-RA240216A0HU	Human, Mouse	ELISA, WB, IHC, IF, FC
PARP1 Antibody	CSB-RA581794A0HU	Human	ELISA, WB, IHC, IF, FC
Phospho-CDK2 (Y15) Antibody	CSB-RA005061A15phHU	Human	ELISA, WB, IHC, IP
Phospho-EIF2AK2 (T446) Antibody	CSB-RA007511A446phHU	Human	ELISA, WB, IHC, IF
Phospho-GSK3B (Ser9) Antibody	CSB-RA009963A09phHU	Human	ELISA, WB, IHC, IF
Phospho-LAT (Y191) Antibody	CSB-RA012767A191phHU	Human	ELISA, WB, IHC, IF, IP
Phospho-MTOR (S2448) Antibody	CSB-RA008968A2448phHU	Human	ELISA, WB, IHC, IF
Phospho-NFE2L2 (S40) Antibody	CSB-RA614961A40phHU	Human	ELISA, WB, IHC, IF
Phospho-POLR2A (S2) Antibody	CSB-RA018327A02phHU	Human	ELISA, WB, IHC, IF, IP
Phospho-RAF1 (S259) Antibody	CSB-RA019284A259phHU	Human	ELISA, WB, IHC, IF
Phospho-STAT1 (S727) Antibody	CSB-RA022810A727phHU	Human	ELISA, WB, IHC, IF
Phospho-YAP1 (S127) Antibody	CSB-RA026244A127phHU	Human	ELISA, WB, IHC
PKM Antibody	CSB-RA632595A0HU	Human, Mouse	ELISA, WB, IHC, IF, FC, IP
SPP1 Antibody	CSB-RA261140A0HU	Human	ELISA, WB, IHC
SSTR2 Monoclonal Antibody	CSB-RA022725MA01HU	Human	ELISA,FC
TOP1 Antibody	CSB-RA792129A0HU	Human	ELISA, WB, IHC, FC, IP
TSPO Antibody	CSB-RA025168A0HU	Human, Mouse	ELISA, WB, IHC, IF, FC, IP
VDAC1 Antibody	CSB-RA025821A0HU	Human, Mouse, Rat	ELISA, WB, IHC

In addition to the products shown above, we have many other high quality products used in Cancer, Cardiovascular, Cell Biology, Epigenetics and Nuclear Signaling, Immunology, Neuroscience, Signal transduction, and so on.

Please kindly scan the QR code to download the full list including all CUSABIO recombinant antibodies.

