

# COVADYE

## FLUORESCENT LABELLING KITS & SERVICES

**Custom Antibody Modification**  
From Research to Discovery

| [www.covalab.com](http://www.covalab.com) |

**covalab**  
R&D in Biotechnology



# COVADYE

Simplify your labelling process

Labelling biomolecules are used to detect immediately the presence and the location of your proteins or other biomolecules in biological systems (cells, tissues...).

Thanks to direct labelling, the amount of fluorescent signal detected is directly proportional to the amount of target protein in your sample. Consequently, no enzyme or binding compounds are required for the detection.

Covalab offers 2 solutions to increase your possibilities of coupling antibodies, proteins or peptides, with a wide range of fluorochromes :

1

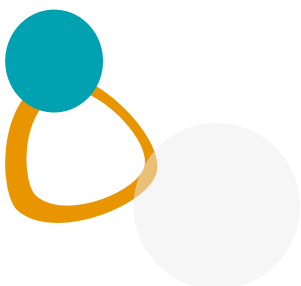
## COVADYE LABELLING KITS

Taking advantage of a simple and fast labelling of antibody in your lab directly for particular wavelengths

2

## CUSTOM COVADYE FLUORESCENT LABELLING SERVICES

Benefit of a specific, precise and personalized labelling achieved by our technical expertise on a wide range of wavelengths



# 1 COVADYE LABELLING KITS

Antibody labelling kits offer an efficient and easy method for the fluorescent conjugation of your antibodies and molecules.

The kit provides everything required for the reaction and purification ensuring reproducibility and easy conjugate process.

In addition, to optimize your working time with a protocol ready to use, the kit is based on the principle of gel filtration to retain the labelled antibodies only.



## EFFICIENT

High coupling capacity decreasing the ratio of antibodies / fluorochromes.



## RELIABLE

Extremely stable conjugation able to label 50 µg of antibody.



## READY TO USE

Kits with specific wavelengths:  
488nm / 550nm / 645nm / 770nm



## TIME SAVING

Reproducible and optimized workflow achievable in 30 minutes before labelling incubation.



## EFFECTIVE

High brightness and purity of the dye.



## COST SAVING

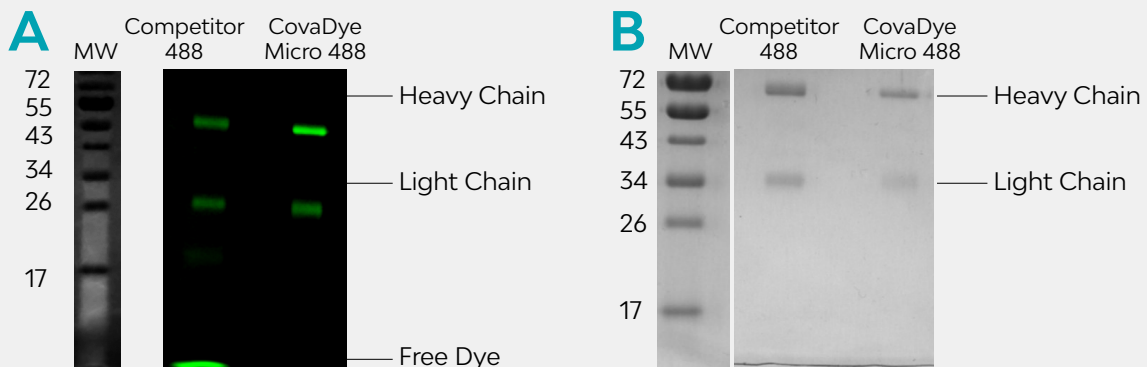
One kit for all applications:  
Flow cytometry, Immunofluorescence, Western blotting...

## 1.

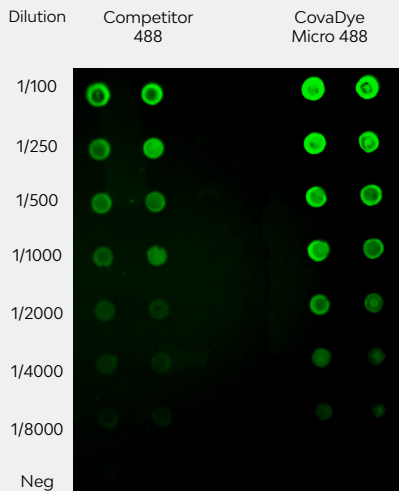
## APPLICATIONS

### HIGH LABELLING CAPACITY

Sample	DOL (Degree of Labelling)
Competitor 488	7,7
CovaDye Micro 488 Labelling Kit	9,5

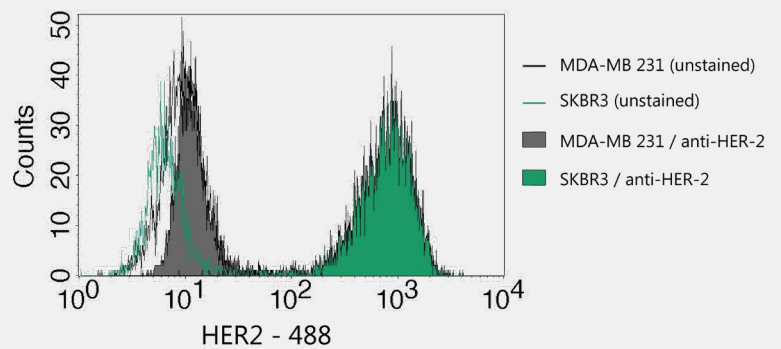


Electrophoresis Analysis comparing a competitor fluorescent dye and CovaDye Micro 488 Labelling Kit (kit5005).  
A : Revealed by Fluorescence 488 Filter  
B: Revealed by silver nitrate staining  
Sample loading (1 µg).



Dot Blotting analysis comparing a competitor fluorescent dye and CovaDye Micro 488 Labelling Kit (kit5005). Revealed by Fluorescence 488 filter. Mouse antibody spotted (1 µg) and anti-mouse (various dilutions).

## STABLE AND SENSITIVE LABELLING



Flow cytometry analysis of cell surface HER-2 receptor using an anti-HER-2 antibody (1 µg) directly labelled by CovaDye Micro 488 Labelling Kit (kit5005). Two cell lines were tested :

- MDA-MB 231 cell line, HER-2 negative (dash: unstained cells, grey: stained cells),
- SKBR3-cell line, HER-2 positive (dash: unstained cells, green: stained cells).

## 2.

## PRODUCTS

### TRIAL SIZE KIT FOR LABELLING 50-200 µG OF ANTIBODY

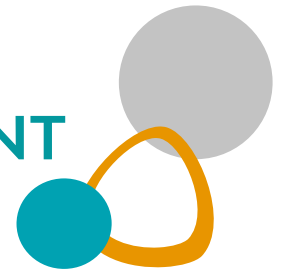
Perfect quantity for small amount of antibodies or for the optimization of your experimental conditions by testing different ratios antibodies / fluorochromes for saving your samples.

Products	Ex/Em (nm)	Packaging	ID Covalab	Code
<b>CovaDye Micro 488 Labelling Kit</b>	<b>495-506</b>	3 x 50 - 200 µg	kit5005	00118220
<b>CovaDye Micro 550 Labelling Kit</b>	<b>550-565</b>	3 x 50 - 200 µg	kit5006	00118222
<b>CovaDye Micro 645 Labelling Kit</b>	<b>648-667</b>	3 x 50 - 200 µg	kit5007	0018224
<b>CovaDye Micro 770 Labelling Kit</b>	<b>774-790</b>	3 x 50 - 200 µg	kit5008	00118226

### PRODUCTION SIZE KIT FOR LABELLING UP TO 1 MG OF ANTIBODY

Products	Ex/Em (nm)	Packaging	ID Covalab	Code
<b>CovaDye 488 Labelling Kit</b>	<b>495-506</b>	1 x 1 mg	kit5001	00118209
		2 x 1 mg	kit5001	00118208
<b>CovaDye 550 Labelling Kit</b>	<b>550-565</b>	1 x 1 mg	kit5002	001182011
		2 x 1 mg	kit5002	001182012
<b>CovaDye 645 Labelling Kit</b>	<b>648-667</b>	1 x 1 mg	kit5003	001182014
		2 x 1 mg	kit5003	001182015
<b>CovaDye 770 Labelling Kit</b>	<b>774-790</b>	1 x 1 mg	kit5004	001182017
		2 x 1 mg	kit5004	001182018

# 2 CUSTOM COVADYE FLUORESCENT LABELLING SERVICES



## LET US DO IT FOR YOU!

Direct labelling allows the use of several different fluorescent colors that help you in the study of major biological processes by giving you the ability to selectively identify your target.

Covalab offers the possibility of increasing your ability to label antibodies, proteins or peptides, with a wide range of fluorochromes.

## CUSTOM SERVICE

Ultra-personalized services including technical support advice from immunology experts assisting you in your project.

## INCREASE YOUR RESEARCH OPPORTUNITIES

High custom conjugation of a wide range of antibodies and other small molecules.

## VARIETY OF FLUORESCENT DYE

Covering the broad range from **400 to 800 nm**.

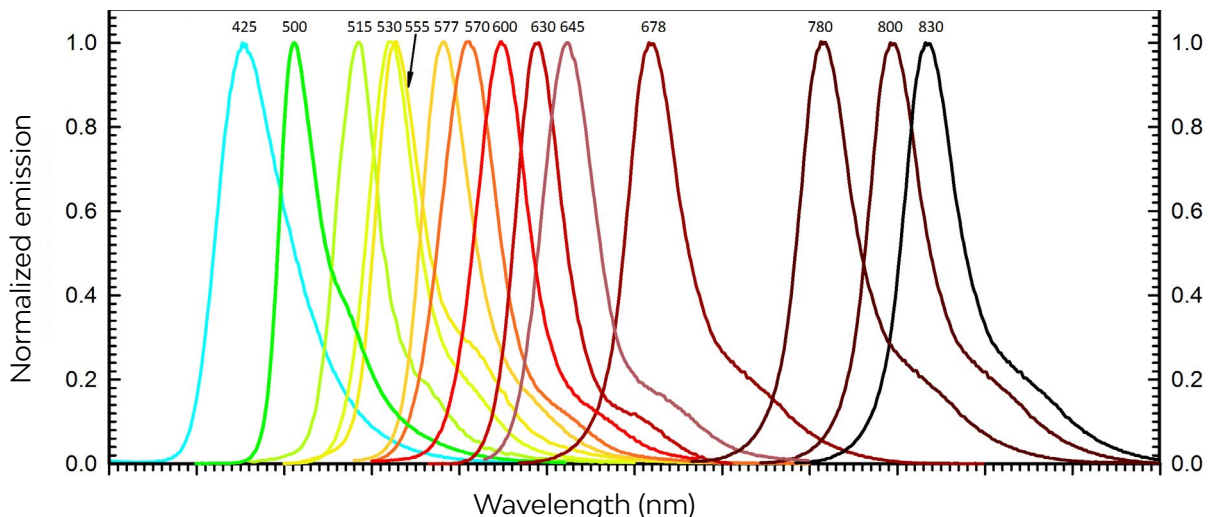
## IDENTIFY ONLY YOUR TARGET

Low non-specific background.

## EFFECTIVE

One labelling for all applications:  
*Flow cytometry, Immunofluorescence, Western blotting...*

Label	Ex/Em
CovaDye 425	425/476
CovaDye 488	495/506
CovaDye 530	529/561
CovaDye 550	553/568
CovaDye 570	573/612
CovaDye 590	584/598
CovaDye 630	629/646
CovaDye 645	648/667
CovaDye 678	677/703
CovaDye 770	772/803
CovaDye 800	802/825
And many others...	



Emission Spectra of the CovaDye range



SCIENTIFIC  
SUPPORT  
**EXPERTISE**  
HIGH  
QUALITY  
**REACTIVITY**  
FLEXIBILITY  
SINCE 1995

The logo for Covalab, featuring the word "covalab" in a lowercase, sans-serif font. A white swoosh underline is positioned beneath the letters "o", "v", and "a". Below the swoosh, the tagline "R&D in Biotechnology" is written in a smaller, italicized font.

covalab  
*R&D in Biotechnology*

## CONTACT US

---

### **Covalab S.A.S.**

11 avenue Albert Einstein  
69100 Villeurbanne  
France

☎ +33 (0) 437 654 230

✉ [enquiries@covalab.com](mailto:enquiries@covalab.com)

[www.covalab.com](http://www.covalab.com)