



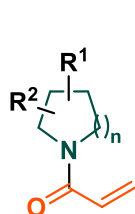
LCC
ACCELERATE YOUR DISCOVERY

MOLECULES OF THE MONTH

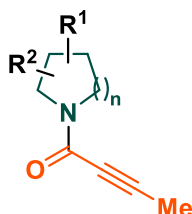
Covalent Fragments

Liverpool ChiroChem Ltd.'s (LCC) fragment collection contains a **high proportion of secondary amines** that are **ideally suited to be converted into covalent fragments**.

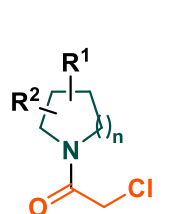
Warheads of interest



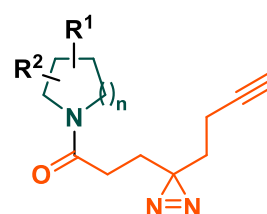
acrylamide



2-butynamide



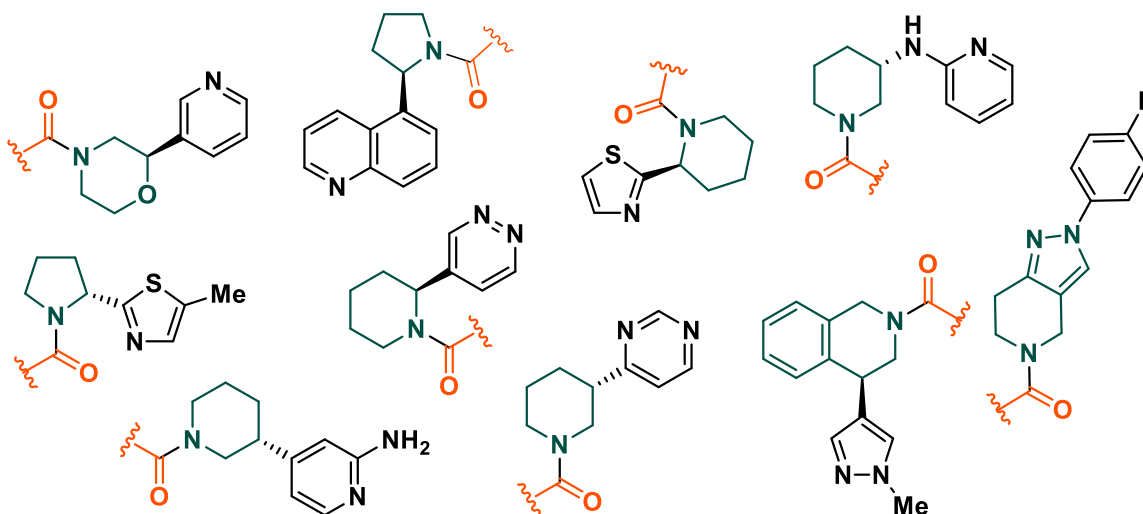
chloroacetamide



diazirine alkyne

We've selected 958 of our **compact, cyclic-based, stereo-defined, sp^3 -rich** fragments, which can be readily converted into covalent fragments while retaining key pharmacophoric features. Coupling between LCC's secondary amines and the selected warheads, offers an opportunity to diversify existing covalent fragment libraries, in order to accelerate your discovery.

Selected examples



Should you require any further information, do not hesitate to get in touch with us at sales@liverpoolchirochem.com.