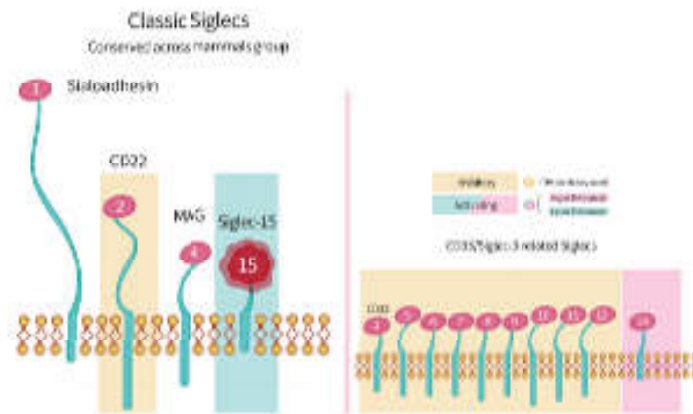


Cell-based Assay Verified Siglec-15 Protein

Siglec-15 is a member of the sialic acid-binding Ig-like lectin (Siglecs) family and is expressed in M2 macrophages, myeloid cells, dendritic cells, B cells, and osteoclasts. Siglec-15 can continuously inhibit the activity of T cells and exhibits the main features of normalized cancer immunotherapy. Related studies have shown that Siglec-15 is the major immunosuppressive factor in most PD-L1 negative tumor patients. And the anti-cancer effect of this target is likely to be mutually exclusive with PD-L1. In tumor cells, the expression level of Siglec-15 is low when PD-L1 expression is high. For those cancer patients who are not effective in PD-1/PD-L1 treatment, Siglec-15 may bring them a new choice of immunotherapy.

High bioactivity Siglec-15 protein can help drugs development. The bioactivity of Siglec-15 proteins developed by ACROBiosystems are verified by Cell-based assay/BLI /SPR /ELISA, and the corresponding protocols are provided for free.

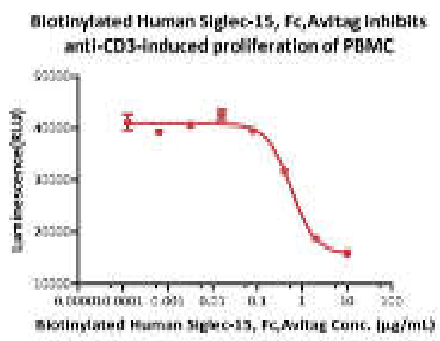


*All the protocols are offered for free. You can send email to Siglec15@acrobiosystems.com to request.

Product Features

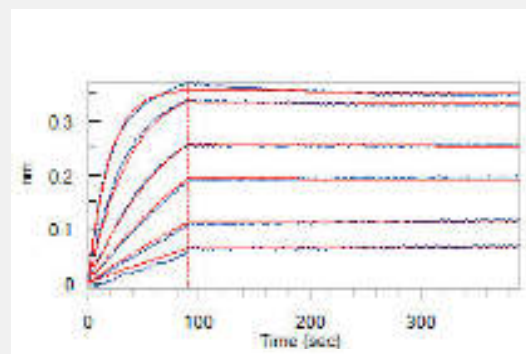
- The bioactivity of Siglec-15 protein was verified by Cell based assay/ BLI/ SPR/ ELISA, and the protocols are offered.

Cell based assay



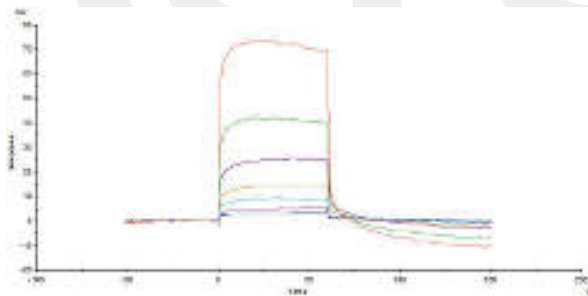
Biotinylated Human Siglec-15, Fc, Avitag (Cat. No. *SG5-H82F5*) inhibits Anti-CD3-induced proliferation of PBMC. The ED50 for this effect is 0.48-0.57 µg/mL.

BLI



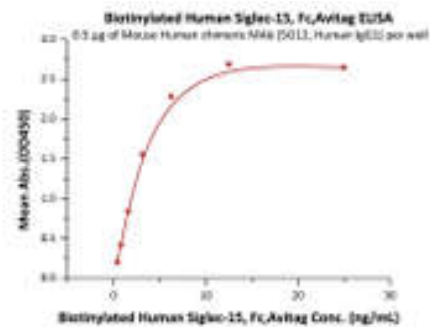
Loaded Anti-Siglec-15 MAb (Mouse IgG) on AMC Biosensor, can bind Human Siglec-15, Fc Tag (Cat. No. *SG5-H5253*) with an affinity constant of 59.7 pM as determined in BLI assay (ForteBio Octet Red96e).

SPR



Immobilized Neu5Ac(a2-6)GalNAc-PAA-biotin on SA Chip can bind Human Siglec-15, Fc Tag (Cat. No. **SG5-H5253**) with an affinity constant of 4.49 μ M as determined in a SPR assay (Biacore T200).

ELISA



Immobilized Mouse Human chimeric MAb (5G12, Human IgG1) at 5 μ g/mL (100 μ L/well) can bind Biotinylated Human Siglec-15, Fc, Avitag (Cat. No. **SG5-H82F5**) with a linear range of 0.4-3 ng/mL.

More species and tags to choose

Cat. No.	Species	Product Description
SG5-H52H3	Human	Siglec-15 / CD33L3 Protein, <u>His Tag</u>
SG5-H5253		Siglec-15 / CD33L3 Protein, <u>Fc Tag</u>
SG5-H82F5		Biotinylated Siglec-15 / CD33L3 Protein, <u>Fc, Avitag™</u>
SG5-H82E9		Biotinylated Siglec-15 / CD33L3 Protein, <u>His, Avitag™</u> (recommended for biopanning)
SG5-M52H7	Mouse	Siglec-15 / CD33L3 Protein, <u>His Tag</u>
SG5-C52H6	Cynomolgus	Siglec-15 / CD33L3 Protein, <u>His Tag</u>
SG5-C5253		Siglec-15 / CD33L3 Protein, <u>Fc Tag</u>

*ACROBiosystems also offers more siglec proteins. Welcome to contact us.

Siglec Proteins		
Siglec-2	Siglec-3	MAG / Siglec-4a
Siglec-5	Siglec-6	Siglec-8
Siglec-9	Siglec-10	*Siglec-15

TIM-3
CTLA-4-1BB
Immune Checkpoint
Biotinylated HER2
CD49G/ITR
CD49G/ITR
CD49G/ITR
CD49G/ITR
CD49G/ITR
TNF- α LAG-3
CD137/CD137L
PD-1/CD47/PCSK9
Immune Checkpoint
Biotin-labeled CD137
VEGF165
CD137/CD137L
CTLA-4
Biotin-labeled
HER2
PCSK9
TNF- α PD-L2