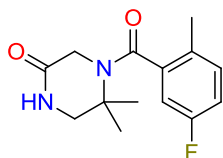


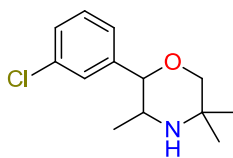
### UORSY Transporters Modulators

Transport proteins participate in almost all biochemical processes in organism. This was the reason why modulating transporters has become an important direction in drug discovery.

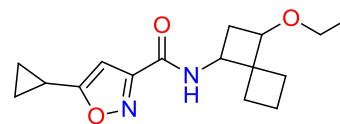
Our **Transporters Modulators** were selected using ligand-based approach — as a similarity search against compounds with known activities against 111 different transporter proteins (see next page). This resulted in the set of **2,134** compounds.



PB2001817754



PB1267851021



PB1261983351

Physicochemical profiles of **UORSY transporters library**:

105<MW<750; HbA≤12; HbD≤6; -4<logP<10; RotBonds<16.

**UORSY Transporters Modulators library** is available as powders, dry films or DMSO solutions. All compounds have a minimum purity of 90% assessed by LC-MS or <sup>1</sup>H NMR; analytical data are provided upon request.

For more information, please contact us at [libraries@uorsy.com](mailto:libraries@uorsy.com)

**Transporter enzymes used to create the library:**

Acetyl-coenzyme A transporter 1  
ATP-binding cassette sub-family B member 6, mitochondrial  
ATP-binding cassette sub-family C member 11  
ATP-binding cassette sub-family G member 2  
Betaine transporter  
Bile acid transporter  
Bile salt export pump  
Canalicular multispecific organic anion transporter 1  
Canalicular multispecific organic anion transporter 2  
Carnitine O-palmitoyltransferase 1, muscle isoform  
Cystine/glutamate transporter  
Cytochrome b-245 heavy chain  
Cytochrome c oxidase subunit 1  
Cytochrome c oxidase subunit 2  
Dopamine transporter  
Equilibrative nucleoside transporter 1  
Excitatory amino acid transporter 1  
Excitatory amino acid transporter 2  
Excitatory amino acid transporter 3  
Fatty acid transport protein 4  
Folate transporter 1  
GABA transporter 1  
GABA transporter 2  
GABA transporter 3  
Glucose transporter  
Glucose-6-phosphate translocase  
Glycine transporter 1  
Glycine transporter 2  
High-affinity choline transporter  
Ileal bile acid transporter  
Long-chain fatty acid transport protein 1  
Low affinity sodium-glucose cotransporter  
L-type amino acid transporter 1  
Mitochondrial carnitine/acylcarnitine carrier protein  
Monoamine transporters; Norepinephrine & dopamine  
Monocarboxylate transporter 1  
Monocarboxylate transporter 2  
Monocarboxylate transporter 4  
Multidrug and toxin extrusion protein 1  
Multidrug and toxin extrusion protein 2  
Multidrug resistance-associated protein 1  
Multidrug resistance-associated protein 4  
Multidrug resistance-associated protein 5  
Multidrug resistance-associated protein 6  
Multidrug resistance-associated protein 7  
NADPH oxidase 1  
NADPH oxidase 5  
Natural resistance-associated macrophage protein 2  
Norepinephrine transporter  
Oligopeptide transporter small intestine isoform  
P-glycoprotein 1  
Potassium-transporting ATPase  
Potassium-transporting ATPase alpha chain 2  
Proton-coupled folate transporter  
Sarcoplasmic/endoplasmic reticulum calcium ATPase 1  
Serotonin and norepinephrine transporters (SERT/NET)  
Serotonin transporter  
Sodium/calcium exchanger 1  
Sodium/glucose cotransporter 1  
Sodium/glucose cotransporter 2  
Sodium/hydrogen exchanger 1  
Sodium/hydrogen exchanger 2  
Sodium/hydrogen exchanger 5  
Sodium/myo-inositol cotransporter 2  
Sodium/nucleoside cotransporter 1  
Sodium/nucleoside cotransporter 2  
Sodium/potassium-transporting ATPase  
Sodium/potassium-transporting ATPase alpha-1 chain  
Sodium-dependent neutral amino acid transporter B(0)AT2  
Sodium-dependent proline transporter  
Solute carrier family 12 member 2  
Solute carrier family 12 member 5  
Solute carrier family 15 member 2  
Solute carrier family 2, facilitated glucose transporter member 3  
Solute carrier family 2, facilitated glucose transporter member 4  
Solute carrier family 2, facilitated glucose transporter member 9  
Solute carrier family 22 member 1  
Solute carrier family 22 member 11  
Solute carrier family 22 member 12  
Solute carrier family 22 member 16  
Solute carrier family 22 member 2  
Solute carrier family 22 member 3  
Solute carrier family 22 member 4  
Solute carrier family 22 member 5  
Solute carrier family 22 member 6  
Solute carrier family 22 member 7  
Solute carrier family 22 member 8  
Solute carrier family 22 member 9  
Solute carrier family 28 member 3  
Solute carrier family 40 member 1  
Solute carrier organic anion transporter family member 1A2  
Solute carrier organic anion transporter family member 1B1  
Solute carrier organic anion transporter family member 1B3  
Solute carrier organic anion transporter family member 1C1  
Solute carrier organic anion transporter family member 2A1  
Solute carrier organic anion transporter family member 2B1  
Solute carrier organic anion transporter family member 3A1  
Solute carrier organic anion transporter family member 4A1  
Solute carrier organic anion transporter family member 4C1  
Sulfonylurea receptor 1  
Sulfonylurea receptor 1, Kir6.2  
Sulfonylurea receptor 2  
Sulfonylurea receptor 2, Kir6.2  
Sulfonylurea receptors; K-ATP channels  
Synaptic vesicular amine transporter  
Thiamine transporter 1  
Transitional endoplasmic reticulum ATPase  
Urea transporter 1  
Vacuolar synthase subunit B, kidney isoform  
Vacuolar ATP synthase subunit S1  
Vesicular acetylcholine transporter