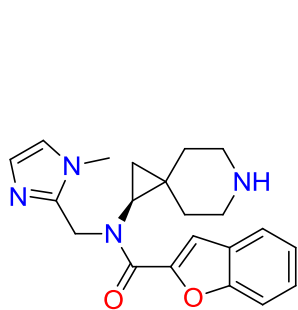


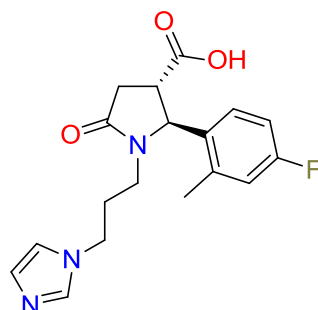
Selective estrogen receptor modulators

Selective estrogen receptor modulators (SERMs) are used in numerous estrogen receptors (ER) related diseases. They act on ERs as agonists or antagonists depending on their implementation.

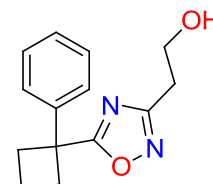
Analysis of literature data allowed us to generate a database of main SERMs active chemotypes and divide them into 8 and 5 clusters for ER α and ER β , respectively. We have performed flexible molecular docking against the known structures utilizing our in-stock compound collection. Final filtering to remove undesirable moieties revealed a set of 3367 compounds.



PB2888895883



PB2888895342



PB1704478221

Physicochemical profiles of **UORSY selective estrogen receptor modulators**:

$200 < MW < 550$; $1 < HbA < 8$; $0 < HbD < 4$; $-2.8 < \log P < 7$; $0 < Fsp^3 < 0.73$; $1 < RotBonds < 14$, $TPSA < 150$.

UORSY selective estrogen receptor modulators are available in stock and could be delivered within 2 weeks in any customer-preferred format: as powders, dry films or DMSO solutions formatted in vials, 96 or 384-well plates. All compounds have a minimum purity of 90% assessed by 1H NMR; analytical data is provided.

For more information, please contact us at screenlibs@uorsy.com