

Namiki Shoji Co., Ltd.:

A trading company involved in marketing pharmaceuticals, compounds for drug discovery, intermediates, and health foods; and providing various biological evaluation services of compounds.

Continues to be chosen as a strategic partner by numerous clients, including major Japanese pharmaceutical companies.

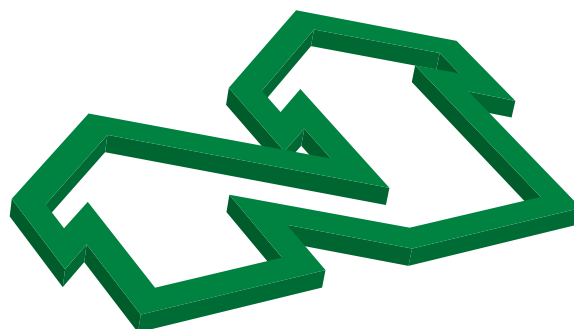


Launched in 1974 as a company trading in raw materials of generic pharmaceuticals.

We later started importing and marketing drug-discovery compounds (compounds for new drug development), first time in Japan. We continue to supply high-quality drug-discovery compounds and intermediates required at the cutting edge of new drug development, and we are holding a firm position with a top share in this field.

With the support of our Pharmaceutical Dept., Drug Discovery Chemicals Dept., and Biological Research Dept., we constantly strive to supply products and services giving our clients 100% satisfaction.

We hope, by means of these commercial activities, to play a significant role in radical new drug development, and our satisfaction lies in any contribution to human health.



Greetings from the President



Tatsuya Namiki
Company President

"By mutually beneficial commercial activities, we grow together with our clients"

With our philosophy of "By mutually beneficial commercial activities, we grow together with our clients", at Namiki Shoji our aim is to expand our business energetically, in our role as the strategic partner of pharmaceutical companies.

Since the founding of Namiki Shoji, we have constantly striven to develop radical new products and services to satisfy our clients, in a creative manner, rising to all challenges presented.

Our business now has two pillars: Pharmaceuticals, and compounds for drug discovery.

Screening compounds and various types of building blocks, which are indispensable for drug design and new drug discovery, are marketed by our Drug Discovery Chemicals Dept. Our highly trained and experienced personnel carry out thorough data management of compounds, using a unique and high-quality chemical database containing millions of structures collected worldwide; deliver ordered compounds rapidly; and then provide complete aftercare in response to all the client's requirements.

Our Pharmaceutical Dept., on the other hand, markets Japanese and overseas pharmaceutical raw materials, intermediates and formulations with complete reliability, on the basis of many years' experience.

In addition, in 2007 we established our new Biological Research Dept., in order to meet the increasing variety of demands from our clients, and compound evaluation services were initiated in that department.

Furthermore, in order to achieve a strategic position in the enormous mainland-Asian market, which is of increasing importance for the global pharmaceutical industry, we established a wholly owned subsidiary, Shanghai Five Ace Trading Co., Ltd., in 2009.

Namiki Shoji will in future continue to strive to fulfill all our clients' requirements and expectations as a highly reliable company and we hope for the continued support of all relevant parties.

Corporate Profile

Corporate name Namiki Shoji Co., Ltd.
Head office Kensei Shinjuku Bldg.3F 5-5-3
 Shinjuku, Shinjuku-ku, Tokyo
 160-0022 JAPAN
TEL +81-3-3354-4026
FAX +81-3-3352-2196
E-MAIL info@namiki-s.co.jp

Osaka branch Okadafushimimachi Bldg.4F 2-5-7
 Fushimimachi, Chuo-ku, Osaka
 541-0044 JAPAN
TEL +81-6-6231-5444
FAX +81-6-6233-6540
E-MAIL info-west@namiki-s.co.jp

Foundation November 15, 1974
Capital 40 million yen
Fields of business Marketing pharmaceuticals, drug-
 discovery compounds, intermediates,
 and health foods.
 Compound evaluation services

Company officers Tatsuya Namiki, President
 Tohru Yokoyama, Executive Officer

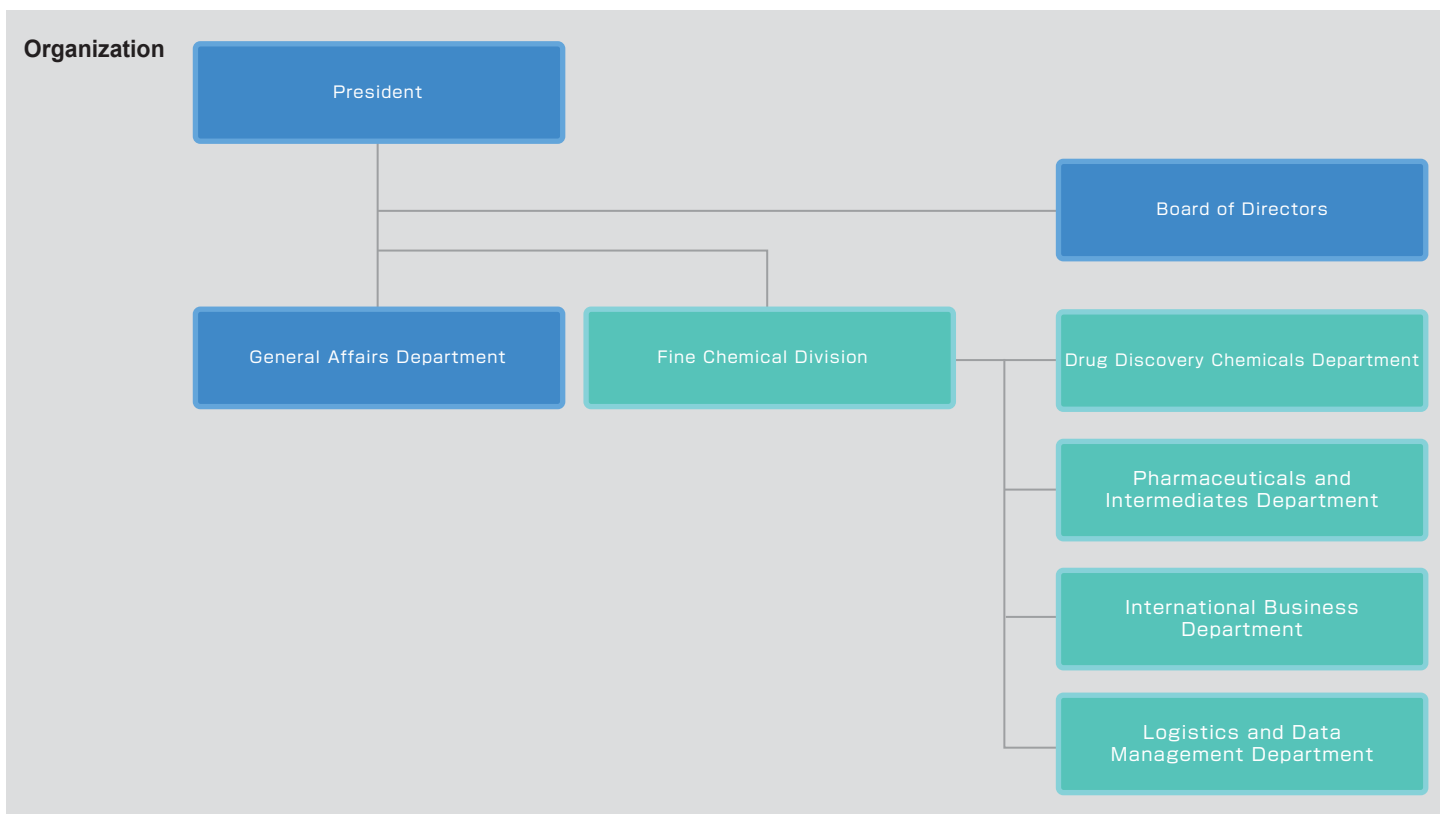
Number of employees 40 (as of April, 2017)

Banks Shinjuku Branch, MUFG Bank
 Shinjuku Branch, Mitsui Sumitomo Bank
 Head Office(Shinjyuku),Saikyo Shinkin Bank

Affiliated companies **Overseas:** Shangai Five Ace Trading Co., Ltd.

Principalclients Pharmaceutical Companies
 Generic Companies
 Organic Chemical Companies
 Cosmetic Companies
 Agricultural Chemical Companies

Membership of organizations The Pharmaceutical Society of Japan
 The Chemical Society of Japan
 Japan Pharmaceutical Trader's Association
 Japanese Society for Chemical Biology
 Japan Chemical Exporters and Importers Association
 Tokyo Yakuji Kyokai
 The Kinki Chemical Society
 Fine Chemicals Research Institute
 Initiative for Parallel Bioinformatics (IPAB)



Company History

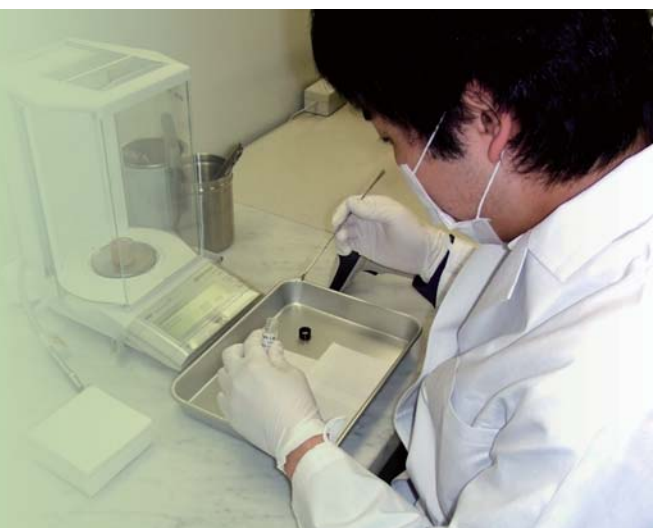
Date	Events	Details and purposes
1974	Established as a pharmaceutical raw material trading company in Shinjuku Matsui Building by Toru Namiki as the President	Established in expectation of increasing specialization in pharmaceutical industry and more use of generics
1977	Collaboration with several Japanese raw material manufacturers	Consistent supply of high-quality, Japanese-made raw materials for generics, with entirely new style of collaboration between manufacturers and the trading company
1980	Exclusive contract with Sterochim Co. (Italy)	Importation of steroids as raw materials for generic formulation development started.
1984	General agency contract with Maybridge Chemical Co., Ltd. (UK)	First involvement with screening compounds
1985	Started business of screening compounds	Forseeing new era of drug discovery, chemical libraries and high-throughput screening.
1986	General agency contract with Farmabios S.p.A. (Italy)	Expansion of steroid importation and marketing
	- Fall of The Berlin Wall - new trends in compound business from ex-Communist countries	
1989	Started business of combinatorial chemistry reagents	Preparation for the second stage of drug discovery
	Full office automation achieved	Preparation for Internet Age: One PC per each Namiki Shoji employee
1992	New Product Research Department established	To strengthen drug discovery support side of business
	Osaka branch established, at Doshomachi, Chuo-ku, Osaka	To provide good service to clients in western Japan
	General agency contract with Peakdale Molecular Ltd. (UK)	Dealing with out-sourcing and contract synthesis
1993	General agency contract with SPECS and BioSPECS B.V. (Netherlands)	Contract with suppliers worldwide to further increase diversity of compounds
1996	Remodeling the head office	In-house environment reorganized to improve customer services
1999	Party held celebrating Namiki Shoji's 25th year of business	Gratitude to all relevant parties
2002	1st Drug Discovery Seminar held	To provide a space for information exchange among pharmaceutical companies
	Website launched	Easy and convenient access to Namiki Shoji
	Weighing Room opened	Weighing service started. Finely-tuned services, such as filling to customer vials and barcode control, put into operation.
2003	Distribution of <i>Drug Discovery News</i> started	Initiation of e-mail information service for clients
2004	2nd Drug Discovery Seminar held	First time to hold seminar at two locations (Tokyo and Osaka)
	Party held celebrating Namiki Shoji's 30th year of business	Wishing to grow further, together with clients and suppliers
2005	General agency contract with Enamine Ltd. (Ukraine)	Expanded targeted libraries and virtual compound libraries
	General agency contract with AnalytiCon Discovery GmbH (Germany)	Establishment of library of natural products that cannot be synthesized chemically
	Location of Osaka Branch changed	Move to present location at Fushimimachi, Chuo-ku, Osaka
	Tatsuya Namiki becomes President	General reshuffle of Board of Directors including President
	Establishment of New Product Planning Department	To explore new business opportunities in life-science field
2006	Location of Tokyo HQ changed	Move to the new place to increase administrative efficiency
	3rd Drug Discover Seminar held	In collaboration with Peakdale Molecular
	ChemCupid established	A free, online chemical database
2007	General agency contract with CEREP Co. (France)	To deal with increasingly diverse requirements at drug discovery stage
	Biological Research Department established	Compound evaluation services started in this department
2008	4th Drug Discover Seminar held	Held in collaboration with Enamine Ltd.
	Shanghai Branch established	Entry to the rapidly growing Chinese market
2009	Shanghai Five Ace Trading Co., Ltd. started the operation	For worldwide supply of reliable Chinese raw materials and intermediates
2010	Establishment of Reagent Business Department	To start selling stock compounds across the world
	5th Drug Discover Seminar held	Held in collaboration with Enamine Ltd.
2011	Awarded the Grand Prize as the Excellent Company for Management by Shinjuku City.	The management with continuous challenges and innovative power was evaluated.

Details of Services

"Providing services that are useful for our corporate partners"

Dept.	Service	Details
Drug Discovery Chemicals Dept.	Screening compounds	The speeding up of new drug development has necessitated provision of numerous compounds. Namiki Shoji can provide approximately 4.5 million compounds from worldwide suppliers. We also provide up-to-date chemical information from everywhere in the world, and strive to be of the maximum help to our clients.
	Building blocks	Building blocks are raw materials for making screening compounds, and are also useful in combinatorial chemistry, synthesis of new compounds, etc. We provide building blocks with specific characteristics, including ones that are not commercially available in Japan. Making use of our global network of contacts, we can deliver such items cheaply and quickly.
	Reference standard	We investigate and provide with compounds that are used for reference and comparison with candidates of new drugs by using our own routes.
	Others	As for the other services, we arrange for custom synthesis, weighing compounds and importing compounds client purchased. We also provide up to date information on laws and regulations on chemicals and a support service for managing regulated compounds.

Dept.	Service	Details
Pharmaceutical Dept.	Raw materials	We sell raw materials and intermediates manufactured under GMP.
	Formulations	We act as an agent in collaborative development and marketing, and commissioning the manufacturing, of ethical pharmaceuticals, over-the-counter drugs, health foods, etc.
	Bulk materials	We provide reagents, intermediates and raw materials, manufactured anywhere in the world, but especially in China, to parties involved in research and development in various fields of chemistry.



Principal Clients

Asahi Kasei Pharma Corporation
 Ajinomoto Co., Inc.
 Ajinomoto Pharmaceuticals Co., Ltd.
 Amakasu Chemical Industries Inc.
 ASKA Pharmaceutical Co., Ltd.
 Astellas Pharma Inc.
 Asubio Pharma Co., Ltd.
 Carna Biosciences Inc.
 Chugai Pharmaceutical Co., Ltd.
 Daiichi Sankyo Co., Ltd.
 Daiichi Sankyo RD Associe Co., LTD
 Dainippon Sumitomo Pharma Co., Ltd.
 Daito Pharmaceutical Co., Ltd.
 Dojin Iyaku-Kako Co., Ltd.
 Eisai Co., Ltd.
 FANCL Corporation
 Fudimi Pharmaceutical Co., Ltd.
 Fuji Pharma Co., Ltd.
 Fukuchi Pharmaceutical Co., Ltd.
 Hamari Chemicals, Ltd.
 Hisamitsu Pharmaceutical Co., Inc.
 Honzo Co., Ltd.
 Ishihara Sangyo Kaisha Ltd.
 Iwai Chemicals Company
 Iwaki & Co., Ltd.
 Iwaki Seiyaku Co., Ltd.
 Japan Tobacco Inc.
 Juzen Chemical Corporation
 Kaken Pharmaceutical Co., Ltd.
 Kirin Holdings Co., Ltd.
 Kishida Chemical Co., Ltd.
 Kissei Pharmaceutical Co., Ltd.
 KNC Laboratories Co., Ltd.
 Kobayashi Kako Co., Ltd.
 Kobe University
 Kongo Chemical Co., Ltd.
 Kotobuki Pharmaceutical Co., Ltd.
 Kowa Company, Ltd.
 Kureha Corporation
 Kyorin Pharmaceutical Co., Ltd.
 Kyoto University
 Kyoto Pharmaceutical Industries, Ltd.
 Kyowa Hakko Kirin Co., Ltd.
 Maruho Co., Ltd.
 Medisa Shinyaku Inc.
 Meiji Seika Kaisha, Ltd.
 Mitsubishi Chemical Corporation
 Mitsubishi Tanabe Pharma Corporation
 Mitsui Chemicals Agro, Inc.
 Mitsui Chemicals, Inc.
 Mochida Pharmaceutical Co., Ltd.
 Mylan Inc.
 National Institute of Radiological Sciences
 NARD institute, Ltd.
 National Institute of Advanced
 Industrial Science and Technology
 Nichi-Iko Pharmaceutical Co., Ltd.
 Nippon Chemiphar Co., Ltd.
 Nippon Funmatsu Yakuin Co., Ltd.
 Nippon Kayaku Co., Ltd.
 Nippon Shinyaku Co., Ltd.
 Nippon Soda Co., Ltd.
 Nipro Genepha Corporation
 Nipro Pharma Corporation
 Nissan Chemical Industries, Ltd.
 Nisshin Pharma Inc.
 Nisshin Seifun Group Inc.
 Nitto Medic Co., Ltd.
 Ogawa & Co., Ltd.
 Ohara Pharmaceutical Co., Ltd.
 Ono Pharmaceutical Co., Ltd.
 Osaka University
 Otsuka Chemical Co., Ltd.
 Otsuka Pharmaceutical Co., Ltd.
 PharmaDesign, Inc.
 RaQualia Pharma Inc.
 RIKEN
 Ryukakusan Co., Ltd.
 Santen Pharmaceutical Co., Ltd.
 Sanwa Kagaku Kenkyusyo Co., Ltd.
 Sanyo Chemical Laboratory Co., Ltd.
 Sato Pharmaceutical Co., Ltd.
 Sawai Pharmaceutical Co., Ltd.
 Shionogi & Co., Ltd.
 Shiseido Co., Ltd.
 Shizuoka Institute of Environment and Hygiene
 Societe des Produits Nestle S.A.
 Sumitomo Chemical Co., Ltd.
 Taiho Pharmaceutical Co., Ltd.
 Taisho Pharm. Ind., Ltd.
 Taisho Pharmaceutical Co., Ltd.
 Taiyo Pharmaceutical Industry Co., Ltd.
 Takeda Pharmaceutical Co., Ltd.
 Tanabe R&D Service Co., Ltd.
 Tatsumi Kagaku Co., Ltd.
 Teijin Pharma Limited
 Teika Pharmaceutical Co., Ltd.
 The University of Tokyo
 Toa Eiyo Ltd.
 Toa Pharmaceuticals Co., Ltd.
 Tokai Capsule Co., Ltd.
 Toray Industries, Inc.
 Towa Pharmaceutical Co., Ltd.
 Toyama Chemical Co., Ltd.
 University of Shizuoka
 Wakamoto Pharmaceutical Co., Ltd.
 Wako Pure Chemical Industries, Ltd.
 Yakult Honsha Co., Ltd.
 Yokohama City University
 Yoshindo Inc.
 Zenyaku Kogyo Co., Ltd.
 ZERIA Pharmaceutical Co., Ltd.

Compound Suppliers

General Agencies in Japan

Ambinter c/o Greenpharma SAS
 AnalytiCon Discovery GmbH
 Bepharma
 BioBioPha Co., Ltd.
 BioBlocks, Inc.
 Butt Park Ltd.
 Enamine Ltd.
 Farmabios S.p.A
 J & W Pharmed, LLC
 Menai Organics Ltd.
 Peakdale Molecular Ltd.
 Pharmeks Ltd.
 Rare Chemicals GmbH
 Zelinsky Institute Inc.

Country

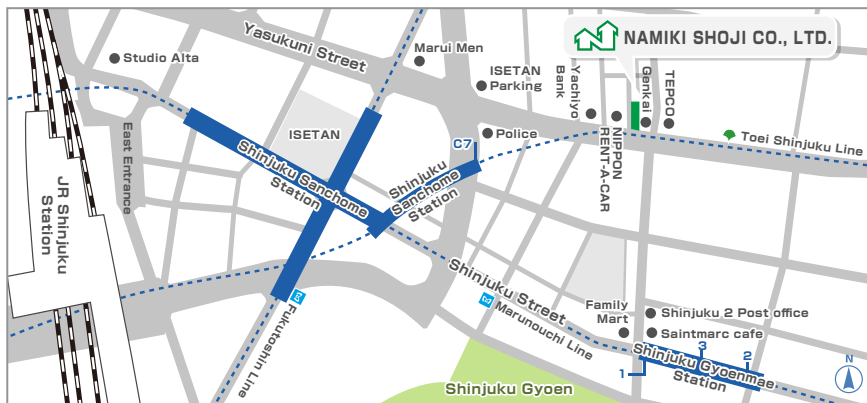
France
 Germany
 China
 China
 USA
 UK
 Ukraine
 Italy
 USA
 UK
 UK
 Russia
 Germany
 USA

Agencies

Accela ChemBio Inc.
 Advanced ChemBlocks, Inc.
 AK Scientific, Inc.
 Apollo Scientific Ltd.
 Ark Pharm, Inc.
 Asinex Ltd.
 ChemFuture
 Chem-Impex International, Inc.
 Cloud-Clone Corp.
 Combi-Blocks, Inc.
 Dalian Allychem
 KEMPROTEC Ltd.
 Key Organics, Ltd.
 Labotest
 Life Chemicals Inc.
 Matrix Scientific
 MAYBRIDGE
 OTAVA
 Princeton Biomolecular Inc.
 Sai Advantium Pharma Ltd.
 Selleck
 Sequoia Research Products Ltd.
 Speed Chemical Corp. Ltd.
 Sundia MediTech Company, LTD.
 Toronto Reserch chemicals Inc.
 UkrOrgSynthesis Ltd.
 Vitas-M Laboratory, LTD.
 WuXi AppTec Co., Ltd.

USA
 USA
 USA
 UK
 USA
 Russia
 China
 USA
 China
 USA
 China
 UK
 UK
 Germany
 Canada
 USA
 UK
 Ukraine
 USA
 India
 USA
 UK
 China
 China
 Canada
 Ukraine
 Russia
 China

Location

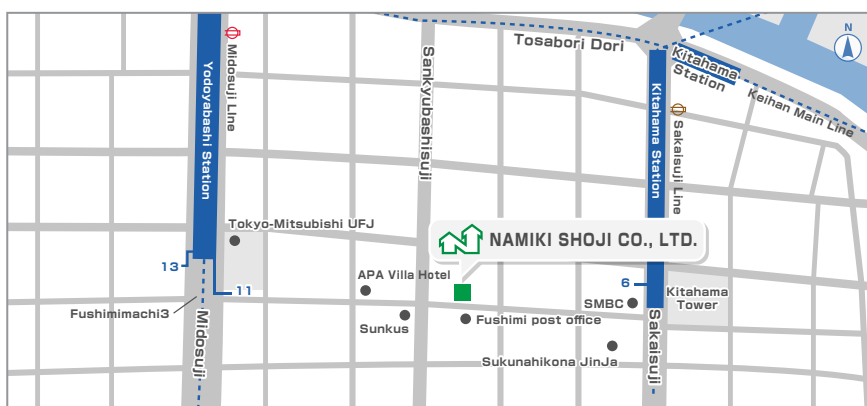


Head Office

〒160-0022
Kensei Shinjuku Bldg. 5-3 Shinjuku 5-chome,
Shinjuku-ku, Tokyo 160-0022 JAPAN

TEL : +81-3-3354-4026 FAX : +81-3-3352-2196
info@namiki-s.co.jp

Toei-Shinjuku Line
4-minute walk from Exit C7 of Shinjuku 3-chome Station
Tokyo Metro Fukutoshin Line
4-minute walk from Exit C7 of Shinjuku 3-chome Station
Tokyo Metro Marunouchi Line
5-minute walk from Exit 1 of Shinjuku Gyoen Station
JR Line
13-minute walk from East Exit or South Exit of Shinjuku Station



Osaka Branch

〒541-0044
Okadafushimimachi Bldg. 5-7 Fushimimachi 2-chome,
Chuo-ku, Osaka 541-0044 JAPAN

TEL : +81-6-6231-5444 FAX : +81-6-6233-6540
info-west@namiki-s.co.jp

Osaka Subway Midosuji Line
5-minute walk from Exit 13 of Yodoyabashi Station
Osaka Subway Sakaisuji Line
5-minute walk from Exit 6 of Kitahama Station

Development Services

ChemCupid®
Online chemical structural database

ChemCupid, developed by Namiki Shoji, is the first Japanese online chemical database. Appropriate compounds, such as high-throughput screening compounds, building blocks, and reagents, can be found easily, by means of simple operations.



Database characteristics

- 01 Free to use
- 02 Contains data on 9.5million compounds with high availability
- 03 Search by importing files such as SDF, mol or Excel files
- 04 Online search by drawing structures
- 05 Downloads search results, using SDF, mol or Excel files
- 06 Can make inquires for prices and availabilities