

Targeted Protein Degradation

Proteolysis Targeting Chimeras (PROTACs) are heterobifunctional degraders that harness the ubiquitin-proteasome system to degrade disease-causing proteins selectively. Their molecular structures are often easily broken into three parts: E3 ligase ligand, linker and protein of interest (POI) ligand. BLD focuses on the supplication of E3 ligase ligand, linker and their conjugates, for your quick and easy access to PROTAC synthesis.

Linker

Target Protein

Target Protein Ligand

Heterocyclic Linkers

Aliphatic Linkers

PEG Linkers

E3 Ligase Binding Moiety

CRBN Ligand

VHL Ligand

MDM2 Ligand

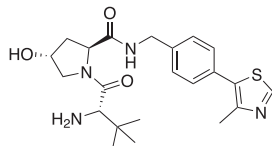
IAP Ligand

E3

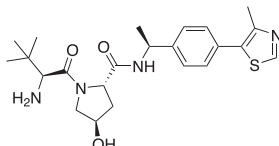
PROTAC COMPONENT COMBINATIONS



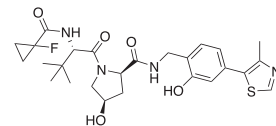
PROTAC Building Blocks



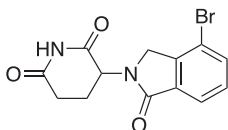
BD560662 [1448297-52-6]



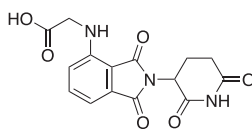
BD00788613 [1948273-02-6]



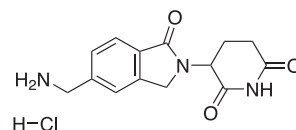
BD01136668 [2306193-99-5]



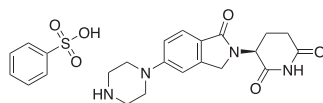
BD01122758 [2093387-36-9]



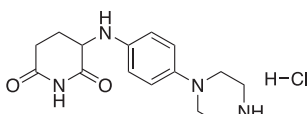
BD01166566 [927670-97-1]



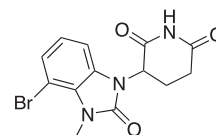
BD01384179 [1158264-69-7]



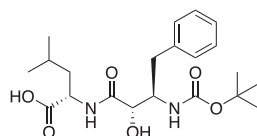
BD01356730 [2229714-16-1]



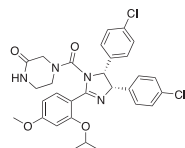
BD01429543 [2259851-45-9]



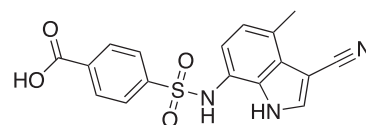
BD01300634 [2304754-51-4]



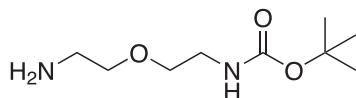
BD763240 [87304-15-2]



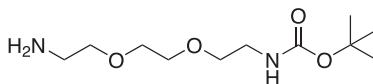
BD559121 [675576-98-4]



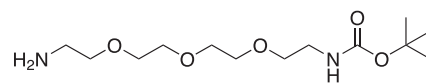
BD01447171 [2408609-63-0]



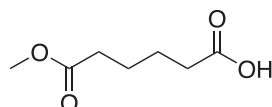
BD248007 [127828-22-2]



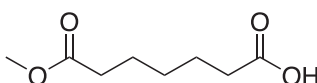
BD117668 [153086-78-3]



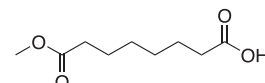
BD251450 [101187-40-0]



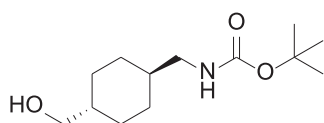
BD3877 [627-91-8]



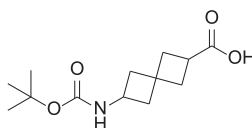
BD254539 [20291-40-1]



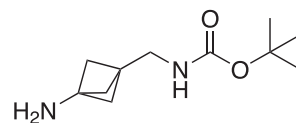
BD152030 [3946-32-5]



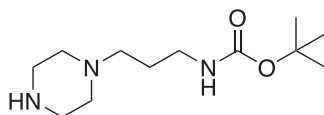
BD315386 [172348-63-9]



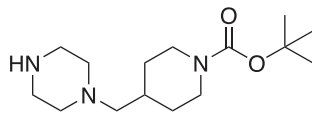
BD235220 [1087798-38-6]



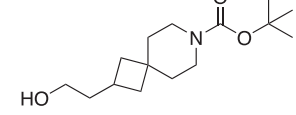
BD300903 [1630906-49-8]



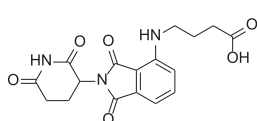
BD259432 [874831-60-4]



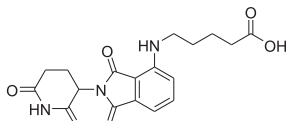
BD01202992 [381722-48-1]



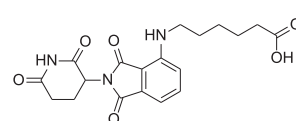
BD01437779 [1370210-93-7]



BD00795449 [2225940-47-4]



BD01497494 [2225940-48-5]



BD01150416 [2225940-49-6]